

# **Proposal Submission User Guide**

**How to create, complete and submit  
an Application eForm**

Version 1  
18 November 2014

## TABLE OF CONTENTS

<b>Technical requirements.....</b>	<b>3</b>
<b>Overview of the process.....</b>	<b>5</b>
<b>A. Creation of a new application eForm.....</b>	<b>6</b>
STEP 1: REGISTER ORGANISATIONS.....	7
Application eForm homepage .....	7
STEP 2: SELECT THE PROGRAMME, FUNDING OPPORTUNITY AND FORM LANGUAGE .....	8
STEP 3: SELECT THE PARTICIPATING ORGANISATIONS.....	11
Adding organisations .....	11
Removing organisations .....	12
Organisation list complete.....	13
STEP 4: CREATE AND SAVE THE APPLICATION EFORM.....	14
Save the application eForm .....	14
List of partner organisations is not valid .....	15
Your saved form - protected fields .....	16
STEP 5: COMPLETE THE APPLICATION EFORM .....	17
Generic guidance .....	17
Attachments .....	22
STEP 6: VALIDATION AND SUBMISSION .....	24
Validation of your eForm.....	24
Submission of your eForm.....	26
Printing your eForm.....	29
<b>B. Revise list of participating organisations &amp; update existing application eForm .....</b>	<b>30</b>
When to use the 'revise-and-update' function .....	31
What happens to my existing eForm and its content?.....	31
STEP 1: REGISTER ORGANISATIONS.....	32
Application eForm homepage .....	32
STEP 2: UPLOAD EXISTING APPLICATION EFORM.....	33
Confirm correct eForm has been uploaded .....	33
STEP 3: REVISE LIST OF PARTICIPATING ORGANISATIONS.....	34
Changes to the details of existing participating organisations.....	34
STEP 4: CREATE AND SAVE REVISED APPLICATION EFORM.....	35
Save the revised application form .....	35
STEP 5: COMPLETE REVISED APPLICATION EFORM.....	36
STEP 6: VALIDATION AND SUBMISSION .....	36
<b>Technical assistance .....</b>	<b>37</b>
<b>Annex 1 - Specific advice &amp; instructions for your application eForm.....</b>	<b>39</b>

## Technical requirements

The application eForm is an interactive PDF form that requires Adobe Reader software to be installed on your computer for you to be able to complete and submit it.

The creation, download and submission of the form are 'online' activities but completion of the form and its validation are 'offline' activities.

### Adobe Reader

The **minimum** version i.e. lowest version of Adobe Reader that you must have installed on your computer is version 9. You may also use a higher version than this e.g. 9.1, X, XI etc. If you have a **lower** version than 9, you will not be able to complete and submit the eForm.

Follow the link below to be directed to Adobe's website to download the software free of charge or to upgrade your existing copy of the software. If you do not have administrator rights on your computer this activity may require the intervention of your IT department. You will need to specify your operating system before the download can commence.

<http://get.adobe.com/reader/otherversions/>

If you are using Adobe Acrobat (Standard) or Adobe Acrobat Professional, the version must likewise be 9 or higher.

The screenshots in this User Guide are based on version 9 of Adobe Reader.

You can check the system requirements for Adobe Reader – i.e. the minimum required specification of your computer – through the following link:

<http://www.adobe.com/uk/products/reader/systemreqs/>

### Risk of corruption from other PDF readers

Some non-Adobe PDF readers have been known to corrupt eForm files, rendering them unusable and/or unsubmittable. Only therefore use Adobe Reader or one of the Adobe Acrobat products.

### Internet Connection & Browser software

You will require an internet connection and standard browser software to retrieve and submit the online application form.

### Security settings in some versions of Adobe Reader and Adobe Acrobat

If you are using a version of Adobe Reader or Adobe Acrobat that incorporates **Enhanced Security**, it is very likely that the enhanced security settings will block the submission of your eForm. The involved versions of Adobe Reader and Adobe Acrobat are:

- 9.3 or any *higher* version 9 than this (including any sub-versions e.g. 9.3.1, 9.4.2 etc);
- any version X (including any sub-versions e.g. 10.0.1);
- any version or sub-version higher than version X e.g. version XI.

The disabling of the Enhanced Security is performed from the following Adobe Reader menu path:

*Edit > Preferences > Security (Enhanced)*

Uncheck the box *Enable Enhanced Security* and click *OK*. Once the submission has been performed you can re-enable the Enhanced Security. For more detailed instructions (including screenshots), please refer to the relevant 'Known Issue' on the EACEA eForm homepage:

[http://eacea.ec.europa.eu/eforms/index\\_en.php#issues](http://eacea.ec.europa.eu/eforms/index_en.php#issues)

Here you will also find instructions on how to leave Enhanced Security **enabled** but identify your eForm as a trusted item so that its submission is not blocked.

#### Account with the European Commission - ECAS

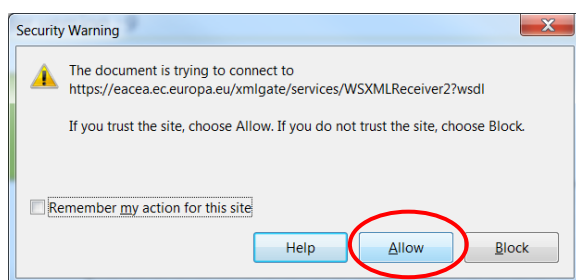
Access to the systems involved in creating an application eForm is validated by ECAS, the European Commission's Authentication Service. Applicants must therefore have an ECAS account. If you do not yet have an ECAS account, please visit the ECAS registration website where you can create your account including an ECAS login username and password. The website is reached through the following link:

<https://webgate.ec.europa.eu/cas/eim/external/register.cgi>

#### Test your connection

The *Test your connection* button appears in the footer of every page of the eForm. Click on this button to verify whether your computer settings and internet connection and settings permit a successful connection to EACEA's submission server to be made. This is not to perform the submission itself but merely to test your submission capability. When successful, you will see the message 'The connection test succeeded' appear in the footer of your form. If it fails, you will see the message 'The connection test failed' appear in the footer. In the latter scenario, you should consult the 'Known issues' section of the eForm homepage where you will find advice on settings etc.

When you perform the connection test, you may see a security warning message pop up:



If you encounter the warning message, click on *Allow* to carry out the test.

In some cases, a second security warning may pop up. If so, click on *Allow* to proceed with the test.

**Please note!** A successful connection test only remains valid if the environment and settings in which it was performed remain the same! If you move your form to a different computer, switch to a different browser or internet service provider, or change your internet, browser or PDF software settings you must perform the connection test again.

#### Advice for Macintosh Users

The eForm can only be opened and completed using Adobe Reader or one of the Adobe Acrobat products. It is not possible to open and work with the eForm using the Mac Preview viewer.

Please therefore ensure that if your default viewer is set as Mac Preview, you nonetheless open the eForm with one of the Adobe products mentioned above. This advice applies to both the download of the form – if you try to open it before downloading – and to the opening of the form for its general completion and submission. For more detailed advice, please visit the 'Known Issues' section of the EACEA eForm homepage:

[http://eacea.ec.europa.eu/eforms/index\\_en.php#issues](http://eacea.ec.europa.eu/eforms/index_en.php#issues)

## Overview of the process

The application process requires electronic submission of proposals, via the internet.

The steps in the application process can be seen in the schematic diagrams below.

The first schematic diagram – diagram A – shows the steps that are involved when creating a **brand new** application eForm.

The second schematic diagram – diagram B – shows the steps that are involved when there is a requirement to **revise the list of participating organisations**. (An 'existing' application eForm is one that you previously created, saved and potentially started completing but have not yet submitted.)

### A. Creation of a new application eForm



### B. Revise list of participating organisations and update existing application eForm



# **A. Creation of a new application eForm**

## STEP 1: REGISTER ORGANISATIONS

The first step in submitting a proposal is performed in the EAC/EACEA Participant Portal.

Before an applicant can create an application eForm, they must ensure that all the organisations that will participate in the application have been registered in the EAC/EACEA Participant Portal. Each organisation that is registered in the Participant Portal is allocated a unique **Participant Identification Code (PIC)**. The PIC is a 9 digit number that helps the European Commission and Agencies identify a participant. It is used in all grant-related interactions between the participants and the Commission.

If an organisation does not have a PIC number it cannot participate in an application.

You will need an ECAS account in order to register your organisation in the Participant Portal. If you do not have an ECAS account, you can find a link to the ECAS registration website in the 'Technical requirements' section of this user guide. The home page of the Participant Portal also includes a link to the ECAS registration website (click on the link 'Are you a new user?').

To enter the Participant Portal, click on the following link:

[Enter the Participant Portal](#)

If your organisation has already participated in a 7<sup>th</sup> Framework Programme (Research) proposal, it is likely that the organisation has already received a PIC number. You can search for existing PIC numbers in the Participant Portal via the 'My Organisation' option.

The registration of your organisation in the Participant Portal will not take more than 10 minutes. Documents related to the organisation can also be uploaded in the portal. Please read carefully the call documents and information in order to know which supporting documents have to be uploaded in the portal.

Please note: not only can a person register their own organisation, they may also register another organisation "on behalf of" that organisation. This can be helpful in case of large partnerships. However, because of the potential for conflicts and confusion, the "on behalf of" registration should be used only when strictly necessary.

Once you have carried out Step 1, navigate to EACEA's Application eForm Homepage.

### Application eForm homepage

The following link takes you to the Application eForm homepage on the EACEA website:

[Application eForm homepage](#)

Pay careful attention to the important points that are listed on the homepage.

Once you have considered and, where necessary, addressed these points, you can proceed to the creation of your application eForm by clicking on the *Create new application for funding* button:

[Create new application for funding](#)

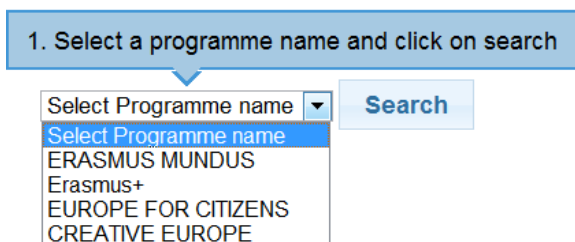
## STEP 2: SELECT THE PROGRAMME, FUNDING OPPORTUNITY AND FORM LANGUAGE

The next step is to select the programme, funding opportunity and form language version.

A series of three numbered instructions will appear on screen.

### Instruction 1

Select the programme you are interested in and click *Search*:



A table of funding opportunities for your selected programme is displayed:

Programme Guide / Call for Proposals	Programme name	Sub-programme name	Action name	Sub-action name	Submission opens	Submission deadline
EACEA/XX/XXX	CREATIVE EUROPE	MEDIA	Audience Development	NA	01/06/2013	02/04/2014
EACEA/XX/XXX	CREATIVE EUROPE	MEDIA	Capacity Building/Training	NA	01/06/2013	02/04/2014
EACEA/XX/XXX	CREATIVE EUROPE	MEDIA	Cinema Network	NA	01/06/2013	02/04/2014
EACEA/XX/XXX	CREATIVE EUROPE	CULTURE SUB-PROGRAMME	Cooperation measures	Category 1 Smaller scale projects	01/06/2013	04/02/2014
EACEA/XX/XXX	CREATIVE EUROPE	CULTURE SUB-PROGRAMME	Cooperation measures	Category 2 Larger scale projects	01/06/2013	04/02/2014
EACEA/XX/XXX	CREATIVE EUROPE	MEDIA	Coproduction funds	NA	01/06/2013	02/04/2014
EACEA/XX/XXX	CREATIVE EUROPE	MEDIA	Development Single Project Cinema / Television / Digital platform	Development Single Project Animation	01/06/2013	04/02/2014
EACEA/XX/XXX	CREATIVE EUROPE	MEDIA	Development Single Project Cinema / Television / Digital platform	Development Single Project Creative Documentary	01/06/2013	04/02/2014
EACEA/XX/XXX	CREATIVE EUROPE	MEDIA	Development Single Project Cinema / Television / Digital platform	Development Single Project Fiction	01/06/2013	04/02/2014
EACEA/XX/XXX	CREATIVE EUROPE	MEDIA	Development Single Project Cinema / Television / Digital platform	Development Single Project Animation	01/03/2014	01/09/2014

If you make a mistake, simply select a different programme and click again on *Search*.

You may filter the table of results using the filter-as-you-type facility. It checks all columns of the table for the presence of your filter text e.g.:

Programme Guide / Call for Proposals	Programme name	Sub-programme name	Action name	Sub-action name	Submission opens	Submission deadline
EACEA/XX/XXX	CREATIVE EUROPE	CULTURE SUB-PROGRAMME	Cooperation measures	Category 1 Smaller scale projects	01/06/2013	04/02/2014
EACEA/XX/XXX	CREATIVE EUROPE	CULTURE SUB-PROGRAMME	Cooperation measures	Category 2 Larger scale projects	01/06/2013	04/02/2014
EACEA/XX/XXX	CREATIVE EUROPE	CULTURE SUB-PROGRAMME	Literary Translations	Two year projects	01/06/2013	02/04/2014
EACEA/XX/XXX	CREATIVE EUROPE	CULTURE SUB-PROGRAMME	Literary Translations	Framework partnership	01/06/2013	02/04/2014
EACEA/XX/XXX	CREATIVE EUROPE	CULTURE SUB-PROGRAMME	Networks	NA	01/06/2013	02/04/2014
EACEA/XX/XXX	CREATIVE EUROPE	CULTURE SUB-PROGRAMME	Platforms	NA	01/06/2013	02/04/2014



**Instruction 2**

Select your funding opportunity (action/strand) by clicking anywhere in its row:

CREATIVE EUROPE Search

**2. Click on a row to select your funding opportunity.**

Show 10 entries Filter search results:

Programme Guide / Call for Proposals	Programme name	Sub-programme name	Action name	Sub-action name	Submission opens	Submission deadline
EACEA/XX/XXX	CREATIVE EUROPE	MEDIA	Audience Development	NA	01/06/2013	02/04/2014
EACEA/XX/XXX	CREATIVE EUROPE	MEDIA	Capacity Building/Training	NA	01/06/2013	02/04/2014
EACEA/XX/XXX	CREATIVE EUROPE	MEDIA	Cinema Network	NA	01/06/2013	02/04/2014
EACEA/XX/XXX	CREATIVE EUROPE	CULTURE SUB-PROGRAMME	Cooperation measures	Category 1 Smaller scale projects	01/06/2013	04/02/2014
EACEA/XX/XXX	CREATIVE EUROPE	CULTURE SUB-PROGRAMME	Cooperation measures	Category 2 Larger scale projects	01/06/2013	04/02/2014
EACEA/XX/XXX	CREATIVE EUROPE	MEDIA	Coproduction funds	NA	01/06/2013	02/04/2014
EACEA/XX/XXX	CREATIVE EUROPE	MEDIA	Development Single Project Cinema/Television/Digital platform	Development Single Project Animation	01/06/2013	04/02/2014

Your selected funding opportunity will now appear at the top of the screen and will also be highlighted in the results table:

Programme details and application language version

Programme name	Sub-programme name	Action name	Sub-action name	Submission opens	Submission deadline
CREATIVE EUROPE	CULTURE	Cooperation measures	Category 1 Smaller scale projects	10/12/2013	05/03/2015

Application form language version  
Please select a language

Previous step

CREATIVE EUROPE Search

Show 10 entries Filter search results:

Programme Guide / Call for Proposals	Programme name	Sub-programme name	Action name	Sub-action name	Submission opens	Submission deadline
EACEA/XX/XXX	CREATIVE EUROPE	MEDIA	Audience Development	NA	01/06/2013	02/04/2014
EACEA/XX/XXX	CREATIVE EUROPE	MEDIA	Capacity Building/Training	NA	01/06/2013	02/04/2014
EACEA/XX/XXX	CREATIVE EUROPE	MEDIA	Cinema Network	NA	01/06/2013	02/04/2014
EACEA/XX/XXX	CREATIVE EUROPE	CULTURE SUB-PROGRAMME	Cooperation measures	Category 1 Smaller scale projects	01/06/2013	04/02/2014
EACEA/XX/XXX	CREATIVE EUROPE	CULTURE SUB-PROGRAMME	Cooperation measures	Category 2 Larger scale projects	01/06/2013	04/02/2014
EACEA/XX/XXX	CREATIVE EUROPE	MEDIA	Coproduction funds	NA	01/06/2013	02/04/2014
EACEA/XX/XXX	CREATIVE EUROPE	MEDIA	Development Single Project Cinema/Television/Digital platform	Development Single Project Animation	01/06/2013	04/02/2014
EACEA/XX/XXX	CREATIVE EUROPE	MEDIA	Development Single Project Cinema/Television/Digital platform	Development Single Project Creative Documentary	01/06/2013	04/02/2014

A selection menu for the form language version has also been added to the page.

If you select the wrong funding opportunity, simply select a different funding opportunity from the table and it will appear at the top of the page, replacing your previous selection.

If you wish to change to a different programme, use the *Previous step* button to return to the previous screen.

**Instruction 3**

Use the dropdown menu to select the language version of the application form you require:

Programme details and application language version

Programme name	Sub-programme name	Action name
CREATIVE EUROPE	CULTURE	Cooperation measures

Application form language version  
Please select a language

Previous step

**3. Select the application language version**

Please be aware that for some funding opportunities the eForm may only be available in a limited number of languages.

Once you have chosen your language version, a *Next step* button automatically appears:

**Programme details and application language version**

Programme name	Sub-programme name	Action name
CREATIVE EUROPE	CULTURE	Cooperation measures

**Application form language version**

EN

[Previous step](#) [Next step](#)

The *Next step* button will not appear until you have selected your funding opportunity **AND** selected the language version!

Click on the *Next step* button to move to the next page and proceed with step three, selecting the list of participating organisations.

## STEP 3: SELECT THE PARTICIPATING ORGANISATIONS

In Step 1, you obtained the PIC numbers of the organisations participating in your application. You must now use those PIC numbers to build the list of participating organisations. The Applicant Organisation is also selected during this step.

### Adding organisations

For each organisation participating in your application, enter in turn their PIC number and click on the *Add to list* button:

**Application for funding: selection of the participating organisation(s)**

**List of participating organisation(s)**

For each organisation participating in the application, enter the organisation's PIC number and click Add to list. To search for a PIC using e.g. the organisation name, click [here](#) to be directed to the EACEA Participant Portal.

PIC number:

	PIC	Name

Enter a PIC number and click *Add to list*

As you add your organisations, they are listed in an on-screen table:

**List of participating organisation(s)**

For each organisation participating in the application, enter the organisation's PIC number and click Add to list. To search for a PIC using e.g. the organisation name, click [here](#) to be directed to the EACEA Participant Portal.

PIC number:

	PIC	Name
1	949835156	UK Organisation Name

### Select the Applicant Organisation

#### Directions for applications with **ONLY ONE PARTICIPATING ORGANISATION**

If there is only **one** organisation participating in your application, click on the *Next step* button to proceed to the next page where you can confirm your various selections. In this scenario, the organisation you added will automatically be defined as the Applicant Organisation.

#### Directions for applications with **TWO OR MORE PARTICIPATING ORGANISATIONS**

When you add a second organisation, a new selection menu automatically appears above the partner list table. This is the menu for choosing the Applicant Organisation:

**Applicant organisation**

**Important information!** The Applicant organisation is always listed as the **first** organisation in an application eForm. Consequently, when you create your application eForm, the Applicant Organisation selected below will **automatically** appear as the first partner in the eForm. Once the application eForm has been created, it is not possible to switch the role of Applicant Organisation to a different partner organisation. For this reason, it's essential to unequivocally establish the applicant organisation before creating your application eForm.

Select the Applicant Organisation:

---

**List of participating organisation(s)**

For each organisation participating in the application, enter the organisation's PIC number and click Add to list. To search for a PIC using e.g. the organisation name, click [here](#) to be directed to the EACEA Participant Portal.

PIC number:

	PIC	Name	Country	
1	949835156	UK Organisation Name	UK	<input type="checkbox"/>
2	949834865	BE Organisation Name	BE	<input type="checkbox"/>

This new menu should be used to specify which organisation in the list will perform the role of Applicant Organisation. If the Applicant Organisation already appears in your list you may select it now using the menu. Or you may continue adding all your organisations and then use the menu to select the Applicant Organisation from the full list.

The organisation that you select to be the Applicant Organisation is highlighted in pink:

List of participating organisation(s)

For each organisation participating in the application, enter the organisation's PIC number and click Add to list. To search for a PIC using e.g. the organisation name, click [here](#) to be directed to the EACEA Participant Portal.

PIC number:

	PIC	Name	Country	
1	949835156	UK Organisation Name	UK	<input type="checkbox"/>
2	949834865	BE Organisation Name	BE	<input checked="" type="checkbox"/>
3	949834768	FR Organisation Name	FR	<input type="checkbox"/>
4	949834671	DE Organisation Name	DE	<input type="checkbox"/>

Whichever organisation you select as the Applicant Organisation, it will appear **first** in the eForm that you will eventually create. The Applicant Organisation is always the first one in the eForm.

**Important!**  
**Once you have created your application form, it is not possible to switch the role of Applicant Organisation to a different organisation.**

If, after creating your form, the responsibility for performing the role of Applicant Organisation passes to another organisation you will have to abandon the application form you had created and create a brand new application form.

Coordinator selection

Selection of the Coordinating organisation, where relevant, is wholly managed within the application form itself. There is no requirement during the creation of the list of participating organisations to specify which organisation will perform the role of Coordinator / Coordinating organisation.

**Removing organisations**

To remove an organisation from the list, check the corresponding checkbox at the end of the organisation row concerned...

	PIC	Name	Country	
1	949835156	UK Organisation Name	UK	<input type="checkbox"/>
2	949834865	BE Organisation Name	BE	<input checked="" type="checkbox"/>
3	949834768	FR Organisation Name	FR	<input checked="" type="checkbox"/>
4	949834671	DE Organisation Name	DE	<input type="checkbox"/>

...and then click on the *Remove checked organisation(s)* button.

Check multiple rows for multiple organisation deletion.

To remove **all** rows in one go, check the checkbox on top of the column...

Country	
UK	<input checked="" type="checkbox"/>
BE	<input checked="" type="checkbox"/>
FR	<input checked="" type="checkbox"/>
DE	<input checked="" type="checkbox"/>

...and then click on the *Remove checked organisation(s)* button.

## Organisation list complete

When you selected the Applicant Organisation, the *Next step* button was added to the bottom of the page. When you have finished building your organisation list, click on the *Next Step* button to proceed to the next page where you will have the opportunity to confirm your selections and create your application form:

**Application for funding: selection of the participating organisation(s)**

**Applicant organisation**

**Important information!** The Applicant organisation is always listed as the **first** organisation in an application eForm. Consequently, when you create your application eForm, the Applicant Organisation selected below will **automatically** appear as the first partner in the eForm. Once the application eForm has been created, it is not possible to switch the role of Applicant Organisation to a different partner organisation. For this reason, it's essential to unequivocally establish the applicant organisation before creating your application eForm.

Select the Applicant Organisation:

**List of participating organisation(s)**

For each organisation participating in the application, enter the organisation's PIC number and click Add to list. To search for a PIC using e.g. the organisation name, click [here](#) to be directed to the EACEA Participant Portal.

PIC number:

	PIC	Name	Country	
1	949835156	UK Organisation Name	UK	<input type="checkbox"/>
2	949834865	BE Organisation Name	BE	<input checked="" type="checkbox"/>
3	949834768	FR Organisation Name	FR	<input type="checkbox"/>
4	949834671	DE Organisation Name	DE	<input type="checkbox"/>

## STEP 4: CREATE AND SAVE THE APPLICATION EFORM

This page summarises the selections that you made in the previous steps:

### Confirm details and proceed to application form

If the details below are complete and correct, you may proceed with the creation of your new application. The 'Create application' button is found at the foot of this page. If any details are incorrect or missing, click on the 'Previous step' button to make the necessary changes.

**Programme details and application language version**

Programme name	Sub-programme name	Action name	Sub-action name
CREATIVE EUROPE	CULTURE	Cooperation measures	Category 1 Smaller scale projects

**Application form language version**

Application form language version
EN

**Participating organisation(s)**

**Applicant organisation**

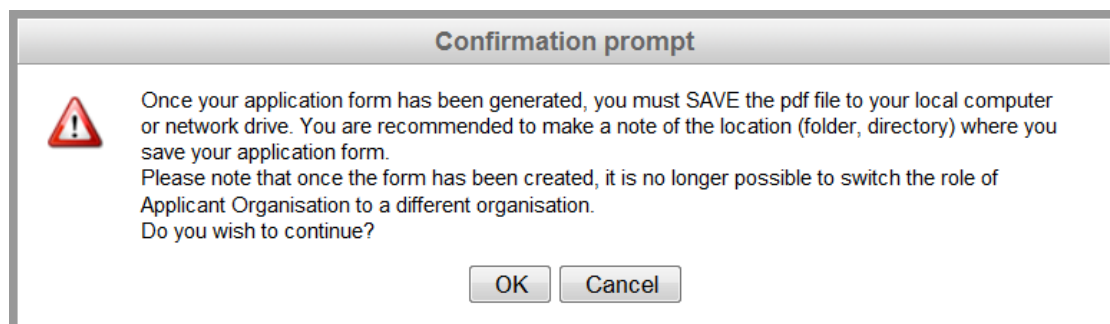
PIC	Name	Country
949834865	BE Organisation Name	BE

**Other participating organisation(s)**

PIC	Name	Country
949835156	UK Organisation Name	UK
949834768	FR Organisation Name	FR
949834671	DE Organisation Name	DE

If all the details are complete and correct, click on the *Create application eForm* button. If any details are incorrect or missing click on the *Previous step* button to make the necessary changes.

When you click on the *Create application eForm* button, a popup message appears:



Carefully read the message content and then click *OK* to continue or click *Cancel* to return to the details confirmation page.

### Save the application eForm

When faced with the option to open or save the form, **SAVE** it to your local computer or network drive. It is recommended that you use the *Save As* option, so that you can precisely select the location where the file is saved.

It is not possible to open and fill in the application form within the browser. You must first save the form to your local computer or network drive. Once it has been saved, you can begin filling it in (using Adobe Reader or one of the Adobe Acrobat products).

If you do not save your application form, you risk losing all the information you entered so far (PICs etc.) and having to start again.

### List of partner organisations is not valid

If, when you open your eform, the list of partner organisations is displayed and is accompanied by the message that your list of partner organisations is not valid, you must carefully review the items that are indicated as being ‘Not valid’. The following screenshot provides some *examples* of partner list items that are not valid:

List of participating organisations					
Your list of partner organisations is not valid. It should respect the rule(s) below:					
Not valid	The minimum number of participating organisations required is: 5				
Not valid	The role of each participating organisation should be introduced.				
Not valid	Organisations with role Applicant Organisation should be from one of the following countries: Austria, Belgium, Bulgaria, Croatia, Cyprus, Czech Republic, Denmark, Estonia, Finland, France, Germany, Greece, Hungary, Ireland, Italy, Latvia, Lithuania, Luxembourg, Malta, Netherlands, Poland, Portugal, Romania, Slovakia, Slovenia, Spain, Sweden, United Kingdom, Former Yugoslav Republic of Macedonia, Iceland, Liechtenstein , Norway, Turkey				
Not valid	Each organisation must be a Non Profit Organisation.				
Partner no	PIC	Role	Organisation Name	City	Country

If you encounter this message, depending on the error(s), it may or may not be possible for you to use the eForm you just created. Please consult the following table for details of how to proceed.

Rule not respected / Not valid item	Action to take
<p>“The role of each participating organisation should be introduced.”</p> <p>(This pertains to the field ‘Role in the application’)</p>	<p>Fill in the missing role for each organisation concerned.</p> <p>If the filling in of the roles triggers <b>further, different validation errors</b>, please consult the next row in this table for advice.</p> <p>If the filling in of the roles does <b>not</b> trigger further validation errors <b>AND</b> if this had been the only validation error originally displayed, you may continue with the completion and submission of your eForm.</p>
<p>Any other item or items listed as being not valid.</p>	<p>You will not be able to continue using the eForm in its current state as it is not possible to validate or submit it. Proceed as follows:</p> <p>(i) Check the eligibility rules that are in force for the funding opportunity you are applying under. Are you compliant with the rules?</p> <p>(ii) If one or more errors relate to organisation data that has been recorded in the EAC/EACEA Participant Portal, return to the Portal to make corrections to your organisation data (see also the next section of this guide ‘Your saved form - protected fields’).</p> <p>(iii) Once you have addressed points (i) and (ii), you may resume the creation of your eForm. You have two options:</p> <ul style="list-style-type: none"> <li>Continue with the eForm you created but update it so that it no longer contains any items that are not valid. To do this you must use the button <i>Revise list of participating organisations and update existing application for funding</i>. See section B of this User Guide for details of how to do this.</li> <li>Abandon the eForm you created and start the creation process again using the <i>Create new application eForm</i> button.</li> </ul>

## Your saved form - protected fields

The funding opportunity details that you selected will appear in the form as **protected** i.e. unmodifiable fields. This is indicated by grey diagonal lines that provide the background to the fields:

These resources and other useful links can be found in a table located at the end of this eForm. [Click to access table.](#)

Programme :	CREATIVE EUROPE
Sub-programme :	CULTURE
Programme Guide / Call for Proposals :	56
Action :	Cooperation projects
Sub-action :	Category 1 - Smaller scale cooperation projects
Deadline for submission :	04/02/2014 12:00 midday (Brussels time)

Likewise, the organisation information you incorporated will appear as **protected** fields. For example:

**Part A. Identification of the applicant and if applicable other organisation(s) participating in the project**

Parts A and B must be completed separately for each organisation participating in the project

**A.1 Organisation**

Partner number :	P1	PIC number :	949834865
Role in the application :	Applicant Organisation		
Full name of the organisation in Latin characters :	BE Organisation Name		
Business name :	BE Business Name		
Registration date :	2013-07-03		
Registration location :	BE Registration Authority		
Registration country :			

**Registered address**

Street :	Number :	Postcode :
BE LE Street name and number		BE LE Postal
Town :	Cedex :	PO Box :
BE LE City		

If the organisation information that appears in the protected fields is incorrect or is out-of-date, the data cannot be modified directly in the eForm but must be modified in the Participant Portal. After the modifications have been carried out in the Participant Portal, they must also be incorporated into your eForm (if it has not already been submitted). In order to incorporate the modifications into your eForm, please follow the steps described in part B of this guide, 'Revise list of participating organisations and update existing application eForm'. **Be aware that there can be a delay of several days before modifications made in the Participant Portal are validated by the Commission and become available for incorporation into your eForm!** See part B for more details.

### Type of organisation

If the eForm you are using includes a 'Type of organisation' field, please take into account the following advice.

Although the 'Type of organisation' field is a field that you have already filled in for your organisation when you registered it in the Participant Portal, it is presented in the eForm as an unprotected field that must be **selected within the eForm**. This is because the list of organisation types available in the eForm is tailored to the funding opportunity you are applying under. Please therefore complete the type of organisation field as you would any other mandatory eForm field and do not try to set its value via the Participant Portal.

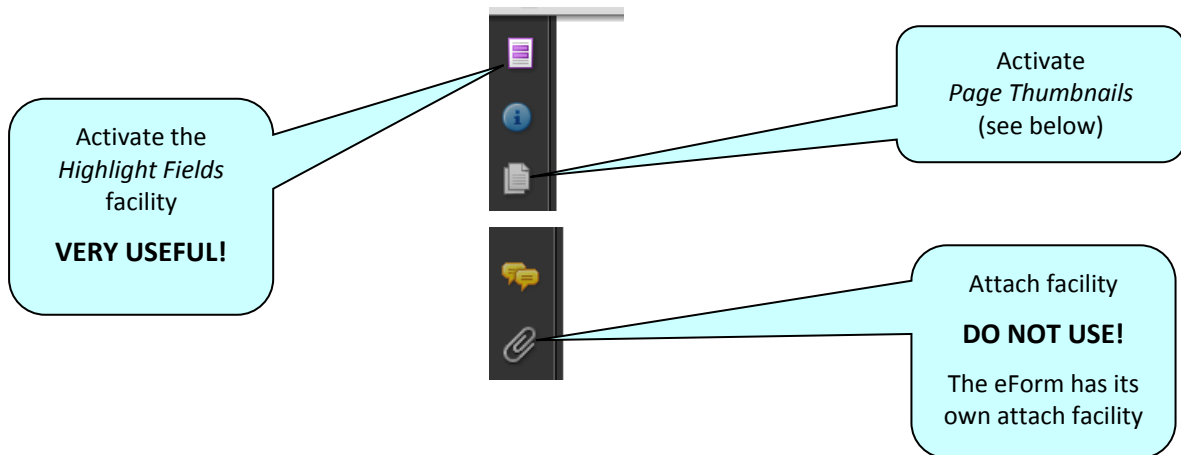


## STEP 5: COMPLETE THE APPLICATION EFORM

### Generic guidance

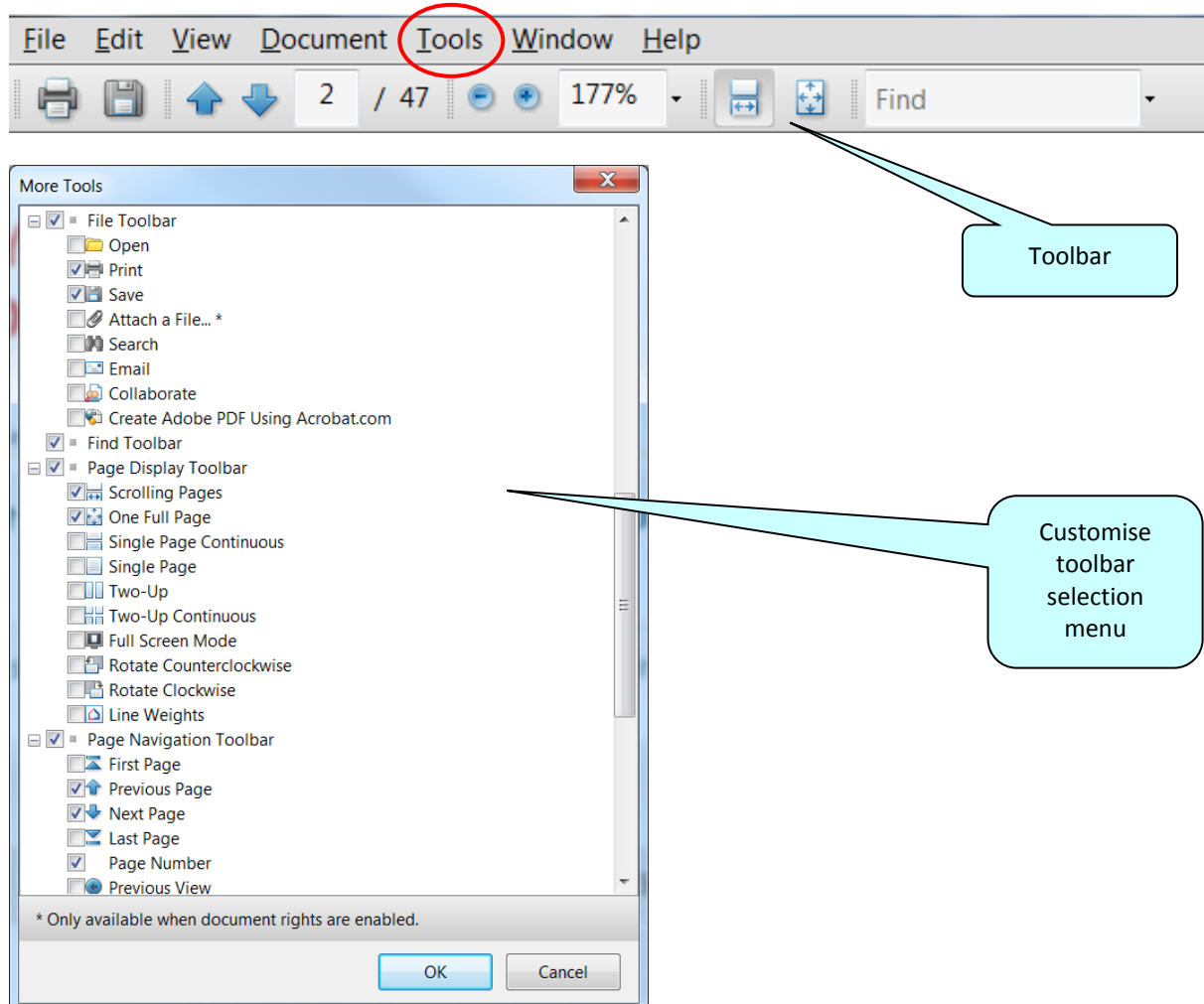
This section provides generic guidance on how to work with and complete an application eForm.

#### Navigation panel

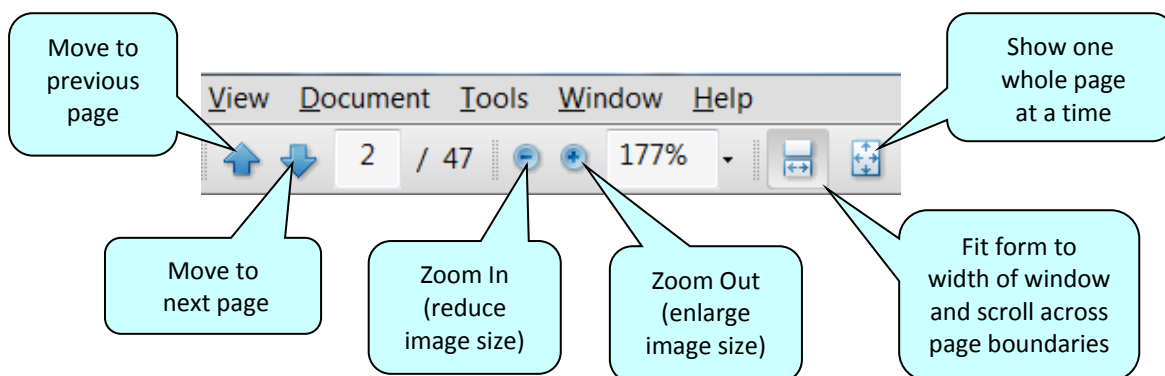


#### Toolbar

From the *Tools* menu you can customise your toolbar e.g. you can add the *Save* button if it is not already displayed. There are also various display and navigation options that you can add.

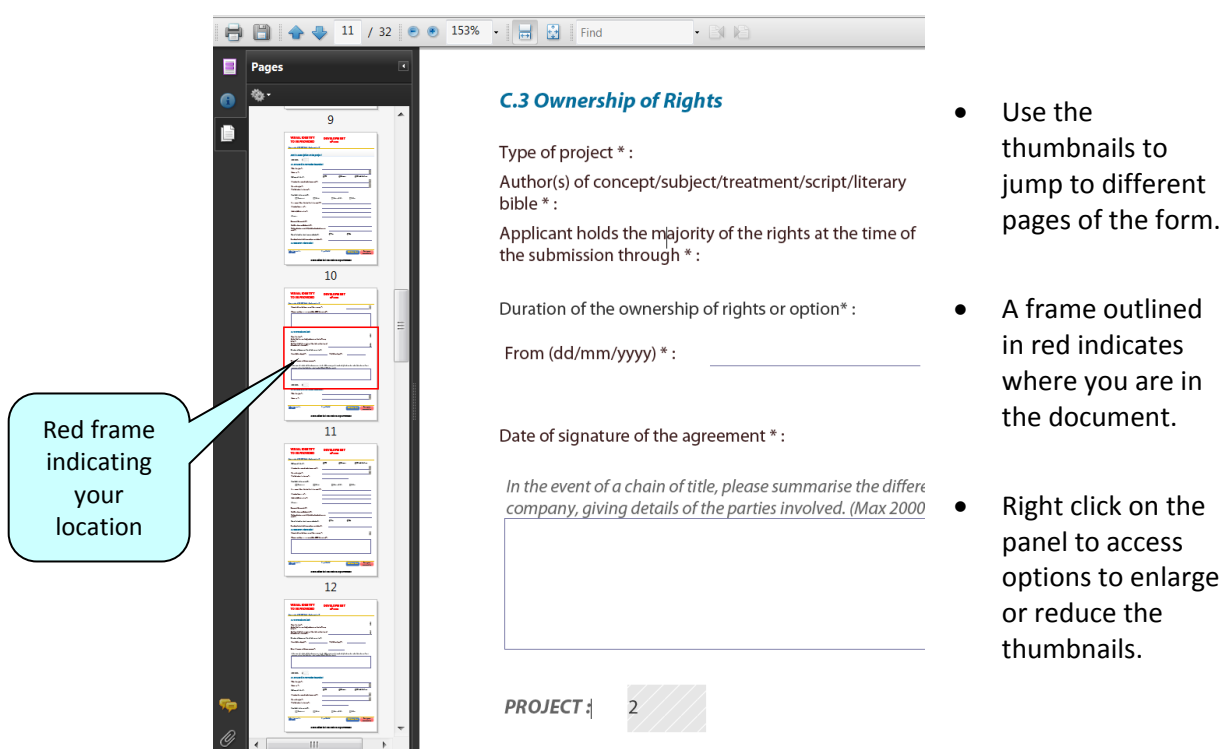


Here are some of the commonly used display and navigation options:



### Page Thumbnails

If you activate the *Page Thumbnails* option, a new panel is opened up on the left-hand side of the screen. It contains miniature previews ('thumbnails') of each page:



### Zoom in / Zoom out

To rapidly zoom in or out, press CTRL on your keyboard and move the scroll wheel on your mouse:

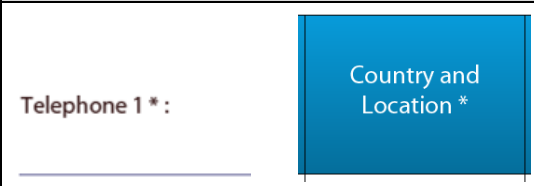

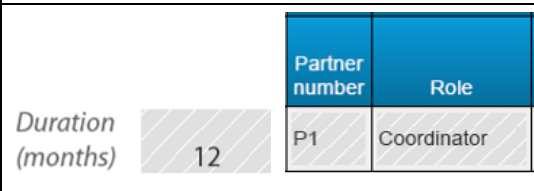
Scroll <b>up</b>	to zoom <b>out</b> , increasing the size of the image
Scroll <b>down</b>	to zoom <b>in</b> , decreasing the size of the image

Entering content

The eForm is an interactive PDF form that contains form fields that are either selected from a restricted list or filled in using free text:

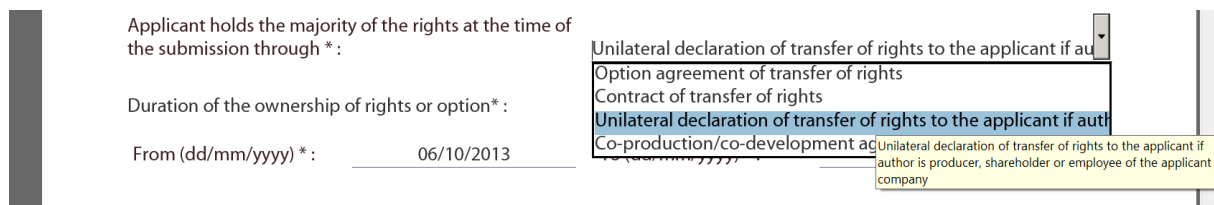
- click inside a text field to enter data;
- click to select options from e.g. dropdown lists, checkboxes, pop-up calendars and radio buttons;
- press Tab to move forward one field or Shift+Tab to move backward one field;
- point and click with the mouse to select a specific field.

Mandatory, optional and protected fields

Field Type	Characteristics	Examples
Mandatory	Field label is accompanied by an asterisk *	
Optional	Field label has no asterisk	
Protected (unmodifiable)	Field contains diagonal grey lines. These fields are either incorporated into the eForm when it is created or they are calculated / filled automatically by the form itself.	

Tooltip for long descriptions

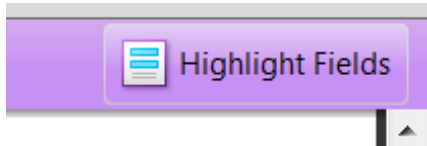
Where a description overflows the menu box, hover your cursor over the menu item to display the full description in a tooltip:



How to highlight mandatory fields



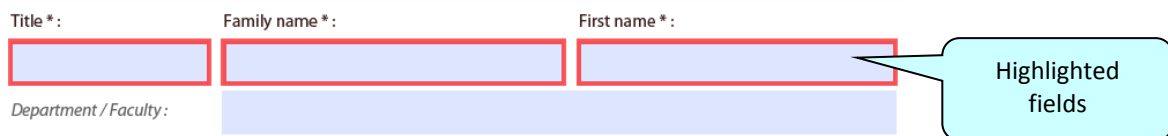
Click on the purple button in the navigation panel and this will activate the *Document message bar* which incorporates the *Highlight Fields* feature.



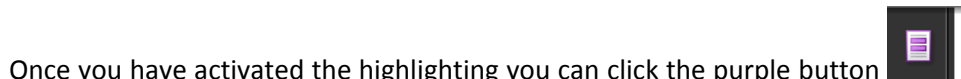
Click on the *Highlight Fields* button and all mandatory and optional fields will gain highlighting that makes them easier to identify (and easier to differentiate from one another).

Mandatory fields – red border and a light blue background

Optional fields – light blue background (and a black border when you hover the cursor over them).



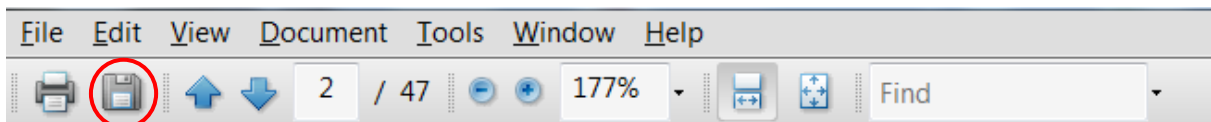
Please note: if any mandatory field remains incomplete the eForm will not validate successfully and it will not be possible to submit your form. Where a numerical field is mandatory but you have no value to enter, please make sure you enter a zero to indicate your null value.



Once you have activated the highlighting you can click the purple button again to remove the *Document message bar* (and maximise the display of your form).

Saving your form

To save your form, click on the *Save* button on the toolbar or select *Save* from the *File* menu or press *CTRL* and *S*.

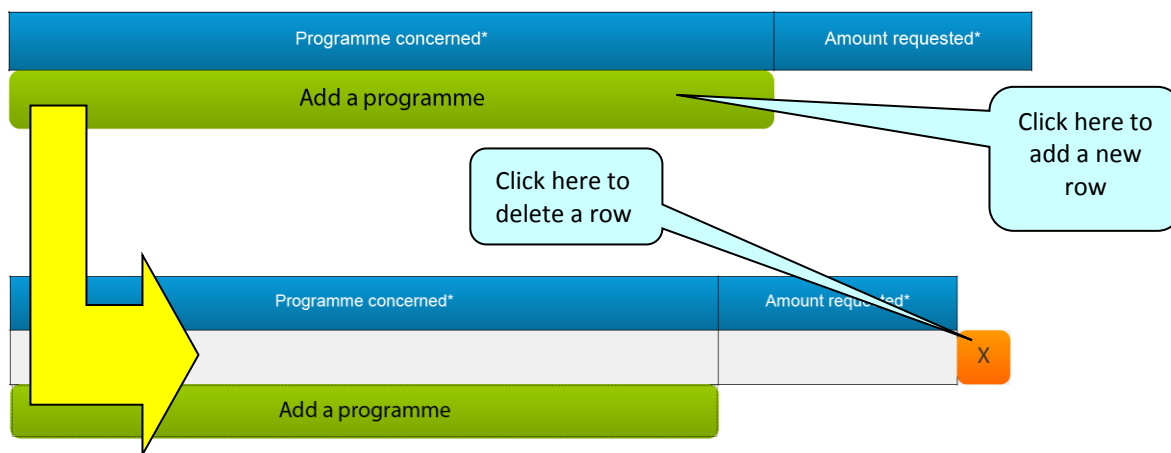


Please ensure that you **save your form on a regular basis**. If you encounter a problem in your local computing environment and your form or your computer crashes, the Adobe Reader auto-recovery function will only restore your form to the point of the **most recent save**.

Using the Add and Delete buttons (eForm tables)

Some fields or groups / blocks of fields are required to be completed more than once allowing you to build up a 'table' of information e.g. a list of political objectives or priorities. Whenever you need to insert a new 'blank' field or add rows to a table, you will do this by using the *Add* buttons.

These buttons are coloured green. Click on them to add the desired new field or table row.



Once you have added a field or row, the delete facility – an orange-coloured button containing an 'x' – appears so that you can delete the field, block of fields or table row concerned (and its contents!).

Please note: some tables are optional but contain fields that are mandatory **once a row has been added**.

Formatting

If you enter formatted content into the form e.g. through copy-and-paste from other document sources, the eForm will strip off the formatting and plain text only will be pasted into the form.

**Please do not copy bullet points into your form.** The formatting of some bullet points can trigger the requirement to download add-ons to your Adobe Reader software (so that it can handle those bullet points).

Character limits

The free text fields in the eForm have character limits that restrict the amount of text you can enter. These limits include both characters AND spaces. If you try to enter more characters than the limit allows the form will simply restrict the text to the predefined limit. Many word processing packages have a 'count' tool that may help you respect the limits. See also Annex 1 of this user guide for details of the character limits for fields where the limits are not cited directly on the eForm.

SPECIFIC eForm advice and instructions linked to your selected funding opportunity

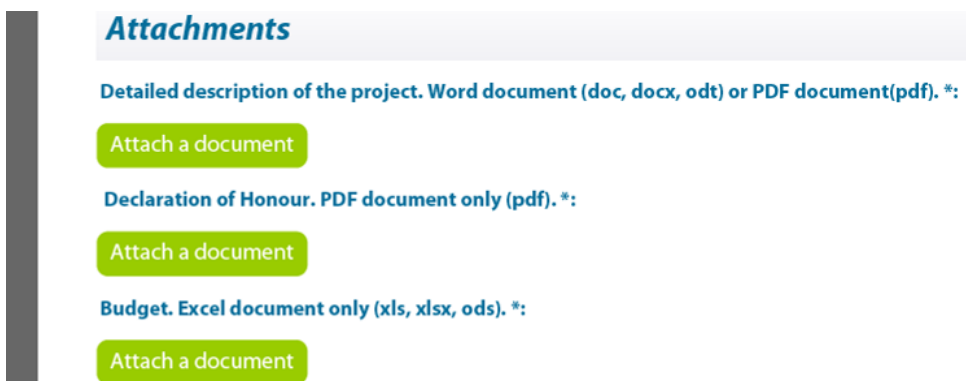
The advice throughout this user guide is generic in nature i.e. it applies to all application eForms regardless of the programme concerned and regardless of the funding opportunity concerned.

However, as eForms have different designs and can contain different functionality, some eForms require additional **SPECIFIC** guidance and instructions that are only relevant to their design and content. If your eForm requires any such specific instructions, these will be included in Annex 1 of this user guide. Please therefore ensure that you consult Annex 1 and take into account any guidance or instructions that you find there.

## Attachments

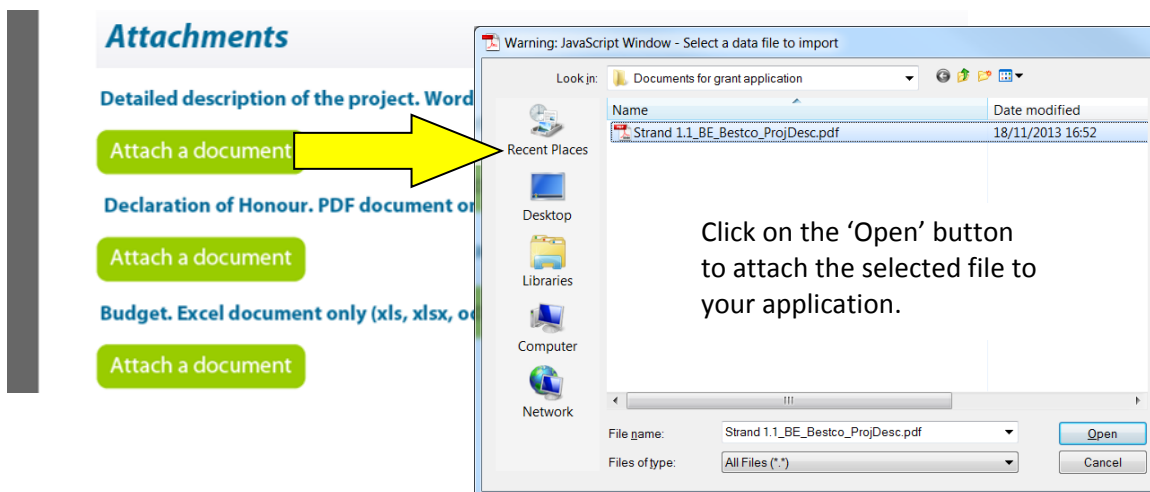
Most application eForms include buttons for the attachment of mandatory annexes. These document annexes are a formal part of the grant application and must be attached to your eForm.

The attachment section is located towards the end of the eForm and the following screenshot provides an *example* of how it may look:

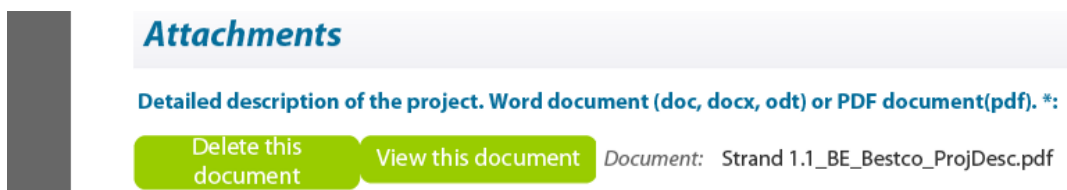


As the screenshot above is merely an example, your own eForm may include different document attachments from the ones displayed above.

To carry out the attach operation, click on the relevant *Attach a document* button and a window will pop up enabling you to browse, locate and select the file you wish to attach:



Once a file has been successfully attached, the filename is displayed and the *Attach a document* button is replaced by a *Delete this document* button and a *View this document* button:

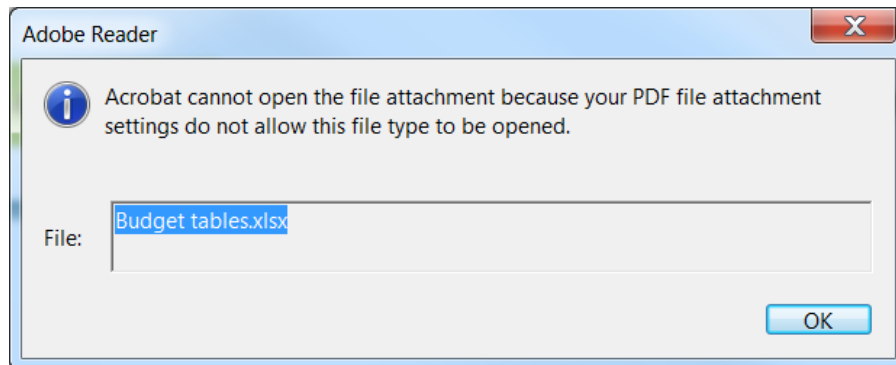


### Attachment size limitation

There is a limit to the **total** (combined) size of your attachments. This is **10MB**. If you receive a message advising you that the total size of documents exceeds the maximum allowed, please reduce the size of the image-based documents e.g. by reducing their resolution.

Viewing attached documents

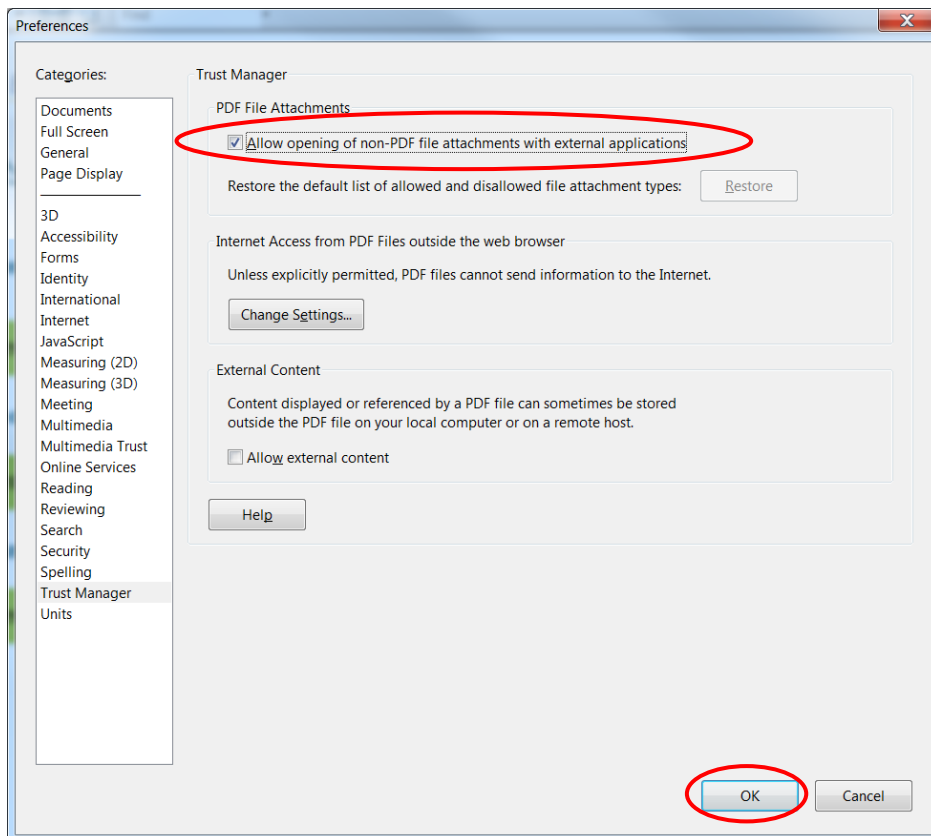
You may encounter the following information message when trying to view non-PDF documents that you have attached:



If so, you can change your settings – to allow such documents to be opened – via the following Adobe Reader menu path:

*Edit > Preferences > Trust Manager*

Check the box *Allow opening of non-PDF file attachments with external applications* and then click *OK* to confirm the setting change:



Revise list of participating organisations and update existing application form

Should you at any time be required to follow the procedure described in Part B of this guide, you will be obliged to re-perform any attach operation you had already carried out. Please therefore ensure that you keep copies of all your attachment files.

## STEP 6: VALIDATION AND SUBMISSION

### Validation of your eForm

The *Validate Form* button appears at the bottom right of every page of the form.



It is recommended that you do not validate your form until you have finished completing it as validation slightly alters the look of the form.

When you are ready, click on the button and various checks will be automatically performed to ascertain whether your form is ready for submission. For example, the validation will verify that all mandatory fields have been completed, that all budget table rules have been respected and that all the mandatory attachments are present.

If there are any errors present, the total number of them will be listed on the last page of your form. If there are any budget or attachment errors these will be itemised separately in the same list:

<i>Submit this form</i>	
<b>Submission number :</b>	00000000
<b>Errors list</b>	
<i>Number of mandatory field(s) not filled in: 225</i>	
<i>The declaration of honour has not been attached.</i>	
<i>The budget tables have not been attached.</i>	

The errors themselves will be highlighted in pink, as illustrated in the example screenshot that follows:

**C.7 Summary of the project (max 2000 characters). Please note that this information may be used for dissemination purposes**

Please indicate the language of the summary \* : ▼

Please note this screenshot is just an example – not all forms will include a summary of the project or a field C.7.



When you validate, an additional button – the *Go to next error* button – appears next to the *Validate form* button.

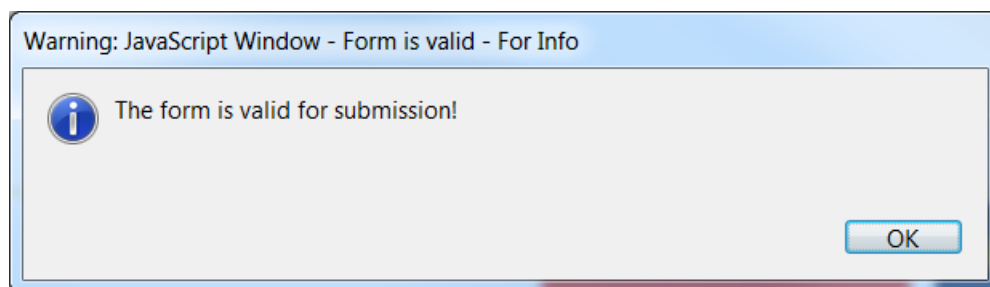
A red rounded rectangular button with the text "Go to next error" in white.A blue rounded rectangular button with the text "Validate form" in white.

Use this button to jump from error to error in your form. The function starts with the error nearest the top of the form i.e. nearest to Page 1 and, as you click the button, it descends the form moving to the next error with each click.

Please note the following:

- When you fix the errors that are highlighted, the *Errors list* is **not** dynamically updated. It is only updated i.e. refreshed when you perform **another** validation.
- The *Go to next error* function works best when you fix errors one by one, following the top-to-bottom sequence used by the *Go to next error* button. If you fix errors out of sequence e.g. fix an error further down the form, the *Go to next error* function will still follow the **original** sequence of errors reported by the validation.
- If you have fixed errors out of sequence, you are recommended to perform a **fresh** validation so that the errors you have fixed are removed from the sequence (and you would then start again from the error nearest the top of the form).
- If you prefer, you can simply do a visual search for the pink errors in your form. If you do this, it is recommended that you first turn **off** the highlighting for mandatory fields. You may also find the thumbnail view a useful aid to quickly detecting the pink highlighted fields.

Whichever method you use, fix the errors that are present and validate your form again. If all errors have been resolved you will see the following pop-up message:



Until your form validates successfully the *Submit this form* button is disabled and it will not be possible to submit your form. The *Submit this form* button turns from grey to green when validation has been carried out successfully.

## Submission of your eForm

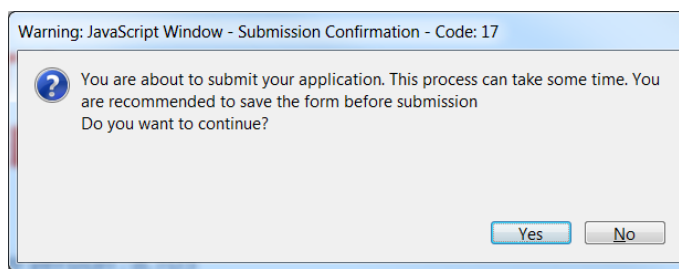
On the final page of the form is the *Submit this form* button. Once your form has been successfully validated the button is enabled (as confirmed by its green colour). Before proceeding with the submission, please ensure you have successfully tested your submission capability using the *Test your connection* button. The button's operation, and what to do if the test fails, are described in the *Technical requirements* section of this user guide.

Please note: the submission process includes the locking of the data and attachments in your form. You may therefore wish to take a backup copy of your form before you begin the submission process.

When you are ready, click on the *Submit this form* button to begin the submission.



The following message will appear:



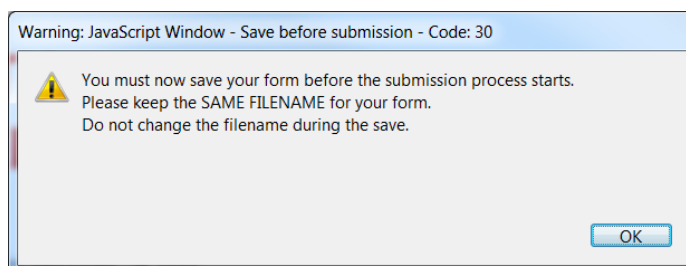
If for any reason you do not want to continue, you may click *No* and carry out the submission at a later time. The submission process will end. **Once you click Yes your form will be locked and it will no longer be possible to modify its content or change the attachments.**

Should you encounter any error messages during the submission of your form, please refer in the first place to the 'Known Issues' section of the eForm home page:

[http://eacea.ec.europa.eu/eforms/index\\_en.php#issues](http://eacea.ec.europa.eu/eforms/index_en.php#issues)

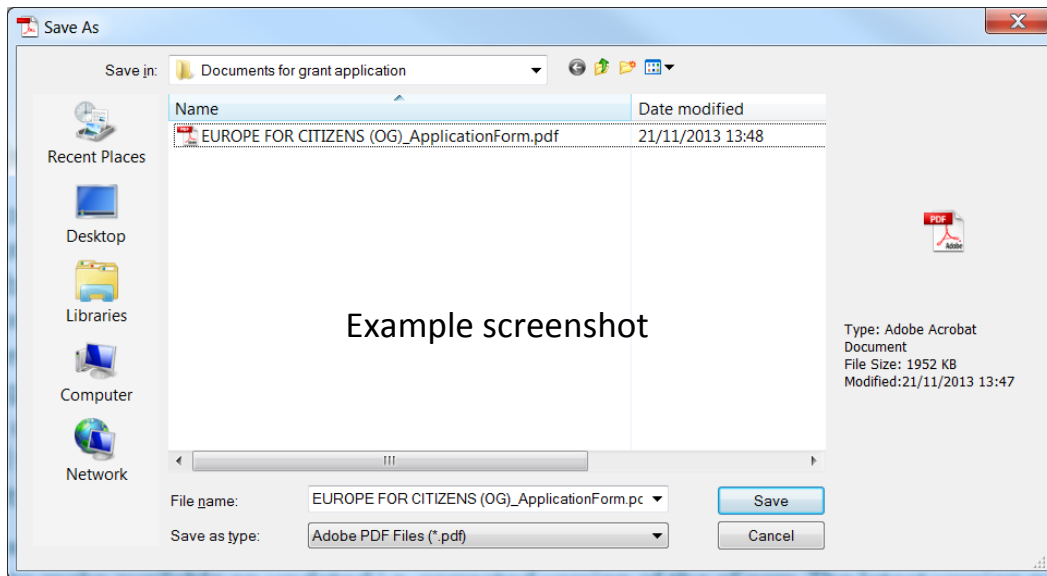
### The mandatory save BEFORE submission

If you click *Yes*, the next step of the submission process is a mandatory save. The following message appears:



When you click *OK*, the form triggers a *Save As* operation. You will see the classic *Save As* window as appears in the screenshot which follows.

(Please note: this screenshot is simply an **example** of the *Save As* window. The window that **you** see, will reflect the filename and directory name that you have been using.)

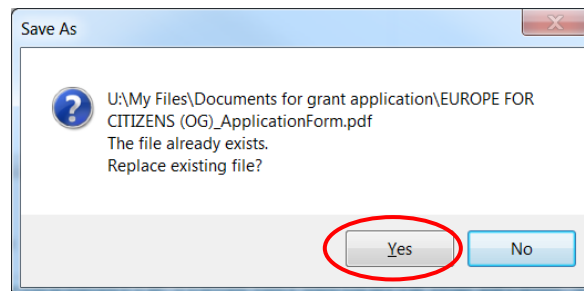


You must now perform the *Save As* by clicking on the *Save* button.

**Very Important!**

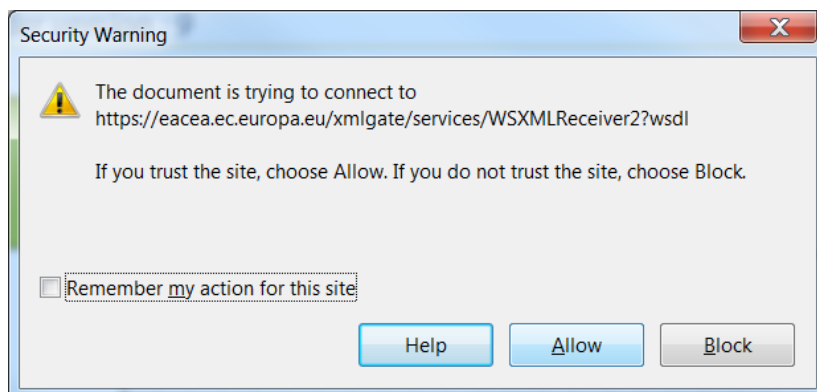
You must **NOT** change the filename of your eForm.  
 You must keep the same filename that the file had when you began the submission operation!

Click *Yes* when you are asked if you want to replace the existing file:



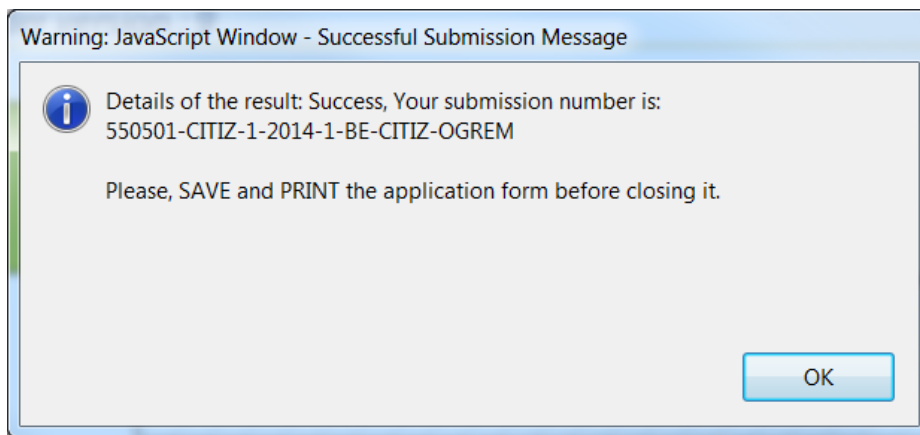
Submission

Depending upon your security settings, the following pop-up window may now appear:



If the window appears, click on the *Allow* button in order to proceed with the submission.

When the submission is complete you will see a pop-up message similar to the one that follows:

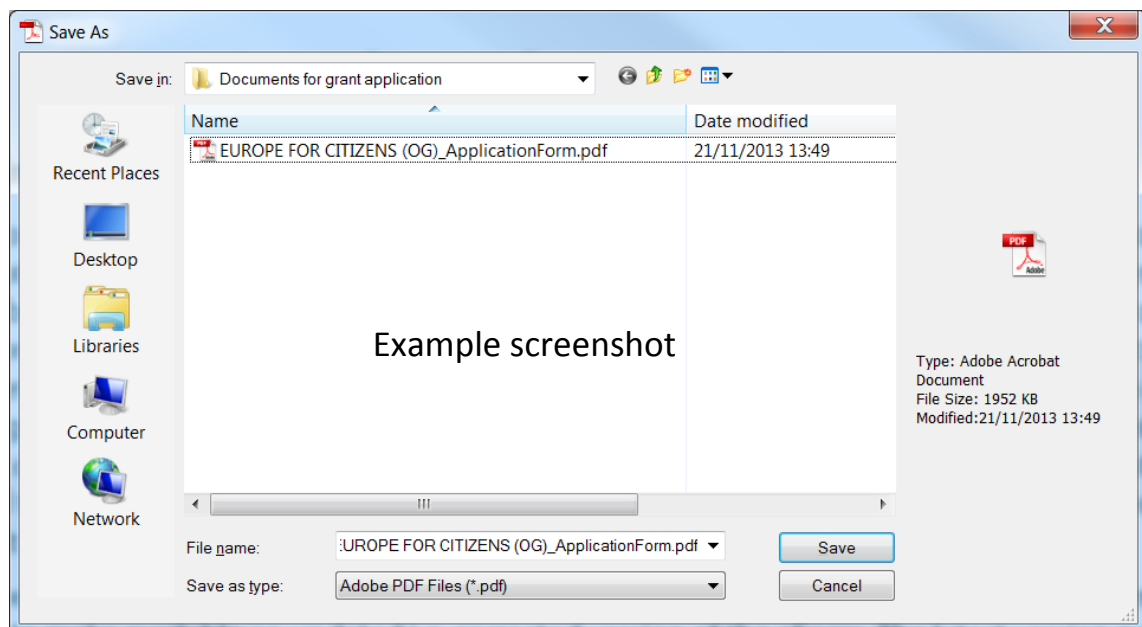


Click 'OK'.

#### The mandatory save AFTER submission

When you click *OK*, the form triggers another *Save As* operation. This is so that you cannot mistakenly close the form without saving (and so lose the submission number).

Once again you will see the classic *Save As* window appear:

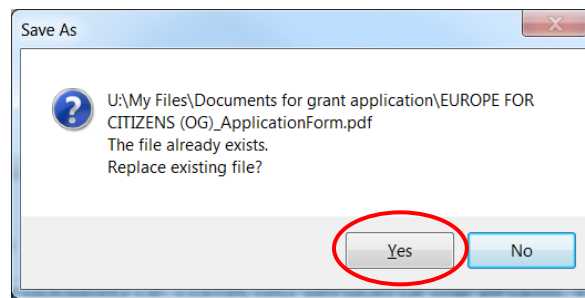


You must now perform the *Save As* by clicking on the *Save* button.

#### **Very Important!**

You must **NOT** change the filename of your eForm.  
You must keep the same filename that the file had when you began the submission operation!

Click **Yes** when you are asked if you want to replace the existing file:



When you click **Yes**, the submission number is automatically added to the *Submission number* box, as seen in the following example:

**Submission number :** 550501-CITIZ-1-2014-1-BE-CITIZ-OGREM

It is also inserted into the footer of your form.

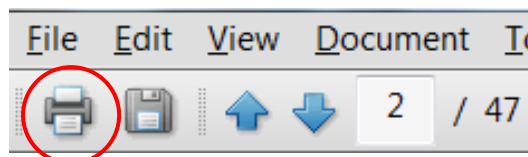
The form has also been saved and this save included the submission number.

Your submitted form is now 'locked'. That is to say, it has been converted to a read-only document: changes cannot be made to it and it cannot be re-submitted.

As part of the submission process, an email message acknowledging receipt of your eForm is automatically sent to the email address you entered for the contact person.

## Printing your eForm

The eForm can be printed using Adobe Reader's standard menu-driven print function. The *Print* button is found on the tool bar, or the *Print* menu can be selected from the *File* menu.



# **B. Revise list of participating organisations & update existing application eForm**

Throughout this section of the guide, the function 'Revise list of participating organisations and update existing application eForm' is abbreviated to the phrase 'revise-and-update'.

### When to use the 'revise-and-update' function

The following table explains when you need to use this function and when you don't. Please note that this revision can only be performed if your eForm has not already been submitted.

Type of change	Revise and update eForm?	Action to take
One or more participating organisations has withdrawn from the application *	No	Simply delete the organisation(s) from the eForm using the delete organisation button.  Check that your organisation profile still meets any eligibility criteria that apply to your selected funding opportunity!
One or more additional organisations will participate in the application	Yes	The organisation(s) must first be registered in the EACEA Participant Portal. Then use the revise-and-update function to incorporate them.
The protected details of any participating organisation (including the Applicant Organisation) have changed	Yes	Update the details of the organisation(s) in the EACEA Participant Portal and then use the revise-and-update function to incorporate the changes.  NB there may be a delay before the changes made in the Portal have been validated and become available for incorporation in your eForm. See below for more details.
Change of the Applicant Organisation	No	It is not possible to change or delete the Applicant Organisation within the eForm.  Abandon your existing eForm and create a new one.

\* If you ONLY have organisations to delete, this can be performed directly in the eForm using the delete organisation button. However, if you have organisations to delete **combined with** a requirement to add organisations and/or modify organisations whose protected details have changed, you should use the revise-and-update function to perform all the changes, including the organisation deletions.

### What happens to my existing eForm and its content?

When you use the revise-and-update function, you upload your existing eForm and any content that you had entered – text, menu selections, checkbox selections etc – is automatically integrated into the updated version of the eForm that is created. **However, any document attachments you had attached to your eForm are NOT retained and are NOT integrated into the updated version of the form.** Therefore, once you have completed the revise-and-update function and saved your updated form, you will need to re-perform the attach operations.

Please note that content relating to organisations that you **remove** from your form will be automatically deleted and will not be integrated into the updated version of the form.

## STEP 1: REGISTER ORGANISATIONS

### New participating organisations

If you have any new participating organisations to add to your application, ensure that they have been registered and PICs allocated to them in the EAC/EACEA Participant Portal.

### Changes to the protected details of existing participating organisations

If there are any existing participating organisations for which the protected details have changed, visit the Participant Portal to register the changes. However, please note the following potential constraint on the validity/availability of the proposed changes:

**If the participating organisation for which changes are being made already has a European Commission grant awarded to it, the proposed changes must be validated by the Commission. During this validation step – which may take several days – the proposed organisation changes are NOT available for incorporation into a revised eForm.** If the participating organisation in question does **not** already have a European Commission grant awarded to it, changes made in the Participant Portal are immediately available for incorporation in a revised eForm.

To enter the Participant Portal, click on the following link:

[Enter the Participant Portal](#)

Once you have carried out this first step and, where necessary, respected any data validation leadtimes, navigate to the Application eForm Homepage.

### **Application eForm homepage**

As with the creation of your application eForm, the place to go to revise and update your form is the Application eForm homepage:

[Application eForm homepage](#)

Once again, pay careful attention to the important points that are listed on the page.

Once you have considered and, where necessary, addressed these points, you can proceed with the revision of your eForm by clicking on the following button:

[Revise list of participating organisations and update application for funding](#)



## STEP 2: UPLOAD EXISTING APPLICATION EFORM

The first page you come to requires you to upload your existing application eForm:

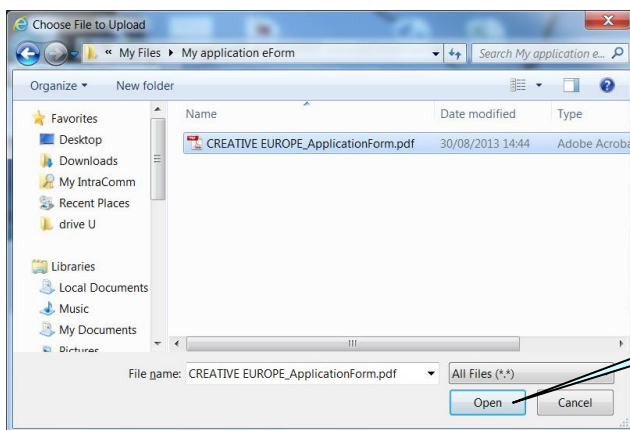
### Application for funding: upload existing application eForm

Please locate and upload your existing application eForm

No File Selected

Browse

(i) Click on *Browse* to locate your eForm pdf file



(ii) Click on *Open* to select the file

### Application for funding

Please locate and upload your existing application eForm

U:\My Files\My application eForm\CREATIVE EUROPE\_Application\_eForm.pdf

Browse

(iii) Click on *Upload*

Upload

## Confirm correct eForm has been uploaded

The key details of your uploaded eForm are presented on-screen:

### Application for funding: details confirmation of uploaded application eForm

The details below are taken from the application that you uploaded. If the correct application has been uploaded, click on "Next step" button to continue. If the application eForm is not the one you wish to revise, click on the "Previous step" button to upload a different application eForm.

Please note: when you proceed to the next step, the organisation data in your eForm will automatically be updated to reflect the latest information available for your organisations in the EAC/EACEA Participant Portal.

Programme details and application language version			
Programme name	Sub-programme name	Action name	Sub-action name
CREATIVE EUROPE	CULTURE	Cooperation projects	Category 1 - Smaller scale cooperation projects
Application form language version			
EN			

Participating organisation(s)		
Applicant organisation		
PIC	Name	Country
949834865	BE Organisation Name	BE
Other participating organisation(s)		
PIC	Name	Country
949835156	UK Organisation Name	UK
949834768	FR Organisation Name	FR
949834671	DE Organisation Name	DE

Previous step   Next step

If the correct eForm has been uploaded, click on the *Next step* button to continue. Alternatively, click on the *Previous step* button to upload a different eForm.

## STEP 3: REVISE LIST OF PARTICIPATING ORGANISATIONS

The page that appears allows you to add new organisations and remove existing ones. The functions work in the same way as described earlier in this guide, with the important exception that it is not possible to remove or change the Applicant Organisation (which is the first-listed organisation).

**List of participating organisation(s)**

For each new organisation participating in the application, enter the organisation's PIC number and click Add to list. To search for a PIC using e.g. the organisation name, click [here](#) to be directed to the EACEA Participant Portal.

You may also remove organisations from your list using the "remove" button on this page. However, please note the following:

- It is not possible to remove the applicant organisation;
- If you have one or more organisations to remove but no new organisation(s) to add, this can be carried out by using the delete organisation button within the application eForm (i.e. you can cancel this operation to revise your existing application eForm and continue to use it.)

PIC number:

	PIC	Name	Country	
P1	949834865	BE Organisation Name	BE	<input checked="" type="checkbox"/>
P2	949835156	UK Organisation Name	UK	<input type="checkbox"/>
P3	949834768	FR Organisation Name	FR	<input type="checkbox"/>
P4	949834671	DE Organisation Name	DE	<input type="checkbox"/>

### Changes to the details of existing participating organisations

If you have one or more organisations for which the organisation details have been changed in the EAC/EACEA Participant Portal (e.g. fields that are protected in the eForm), there is no action for you to take on this page. Those changes will be automatically included in the updated version of the eForm that you will shortly create.

PIC number:

	PIC	Name	Country	
P1	949834865	BE Organisation Name	BE	<input checked="" type="checkbox"/>
P2	949835156	UK Organisation Name	UK	<input type="checkbox"/>
P3	949834768	FR Organisation Name	FR	<input type="checkbox"/>
P4	949834671	DE Organisation Name	DE	<input type="checkbox"/>
5	949834574	IT Organisation Name	IT	<input type="checkbox"/>
6	949834477	ES Organisation Name	ES	<input type="checkbox"/>

Once you have finished making your additions / removals, click on the *Next step* button.

## STEP 4: CREATE AND SAVE REVISED APPLICATION EFORM

Your revised organisation details are displayed:

**Application for funding: details confirmation and revised application eForm creation**

If the organisations details below are complete and correct, you may proceed with the creation of your revised application eForm. The 'Create revised application eForm' button is found at the foot of this page. If you still have revisions to make to your list of participating organisations, click on the 'Previous step' button to make the necessary changes.

**Programme details and application language version**

Programme name	Sub-programme name	Action name	Sub-action name
CREATIVE EUROPE	CULTURE	Cooperation projects	Category 1 - Smaller scale cooperation projects

**Application form language version**

EN
----

**Participating organisation(s)**

**Applicant organisation**

PIC	Name	Country
949834865	BE Organisation Name	BE

**Other participating organisation(s)**

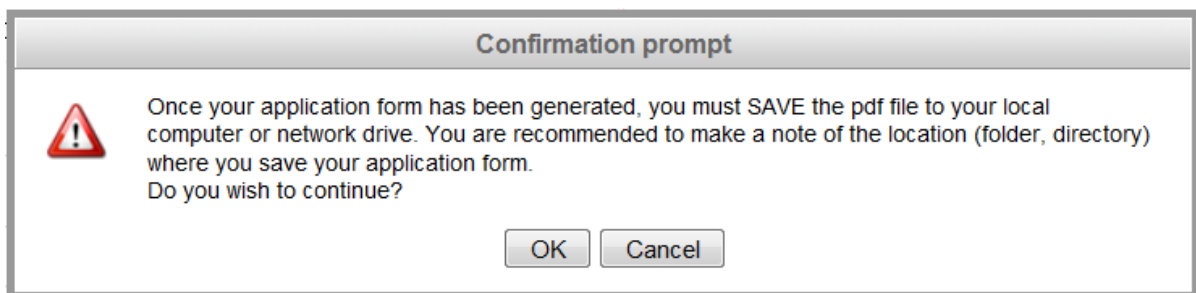
PIC	Name	Country
949835156	UK Organisation Name	UK
949834768	FR Organisation Name	FR
949834671	DE Organisation Name	DE
949834574	IT Organisation Name	IT
949834477	ES Organisation Name	ES

Previous step
Create revised application eForm

If there have been changes to the protected organisation details for any organisation, it is not possible through this page to see and verify those changes. Only additions and removals can be seen on this page.

If the details are correct, click on the button *Create revised application eForm*. Alternatively, if you still have changes to make, click on the *Previous step* button.

When you click on the *Create revised application form* button, a popup message appears:



When you are ready, click *OK* to continue or *Cancel* to return to the details confirmation page.

### Save the revised application form

When faced with the option to open or save the updated form, **SAVE** it to your local computer or network drive. It is recommended that you use the *Save As* option, so that you can precisely select the location where the file is saved.

If you do not save your revised and updated eForm, you risk losing it and having to start the revise and update activity again.

## **STEP 5: COMPLETE REVISED APPLICATION EFORM**

Please refer to Step 5 in section A of this guide.

## **STEP 6: VALIDATION AND SUBMISSION**

Please refer to Step 6 in section A of this guide.

## Technical assistance

If you encounter technical issues that are not addressed in this guide you may contact the EACEA Helpdesk to request assistance. The contact details and hours of operation are as follows:

EACEA Helpdesk	Availability
<p><b>Tel:</b> +32 229 90705</p> <p><b>Email:</b> <a href="mailto:eacea-helpdesk@ec.europa.eu">eacea-helpdesk@ec.europa.eu</a></p>	<p>08:30 to 17:30, Monday to Thursday</p> <p>08:30 to 17:00, Fridays</p> <p>Excluding public holidays and European Commission holidays</p> <p>All times are Brussels time</p>

When contacting the Helpdesk, please have the following information to hand or include it in your email message:

- Your telephone number and your email address;
- The programme and funding opportunity you are applying under;
- The following details for the computer that you are using to complete and submit your application:
  - The version of Adobe Reader (or Adobe Acrobat) that is installed;
  - The internet browser and version you are using;
  - The operating system and version installed on the computer;
- Details of any error messages / error codes that you encountered;
- Screenshots of the problem (if contacting the Helpdesk by email).

This is an example of an error code:

Error code: 213

Invalid application form!

The document you are trying to upload is not an application form.  
Please upload an application form.

Non-technical assistance

The EACEA Helpdesk staff are only authorised and trained to help applicants who are encountering technical problems.

If you have questions relating to non-technical issues e.g. if you have a question about the eligibility rules governing the organisation profile, please contact the **programme team** responsible for the funding opportunity you are applying under. The mailbox address for the programme team will generally be published on the EACEA website on the funding opportunities webpage of the programme concerned.

The following table provides some further examples of technical and non-technical questions.

<b>Technical Questions (handled by the EACEA Helpdesk)</b>	<b>Non-technical Questions (handled by the programme team)</b>
I can't save the eForm I created.	What is required to be entered for the field <i>Status</i> ?
A dropdown list isn't working.	Why isn't country A in the dropdown list?
I can't attach my budget form (or other annexe/attachment).	I need help with completing my budget form.
I can't delete a table row that I have entered.	Why is this field mandatory?
My form freezes/crashes.	Our project has more than one coordinator. What should I do?
My form is working slowly.	What documents are required for the application package and where do I send it?
My form won't validate.	I need more characters for my answer!
My form won't submit.	Where are the templates for the attachments and additional documents?
I think there is a bug in the form.	What should I enter in the form for my project start and end dates?

## Annex 1 - Specific advice & instructions for your application eForm

Application eForm: Erasmus+, Cooperation for Innovation and the exchange of good practices (KA2), 2015.

- Capacity Building in Higher Education.

### List of partner organisations – field ‘Role in the application’ not valid

When opening your eForm for the first time, you may see a message advising you that your list of partner organisations is not valid due to the role of one or more participating organisations being missing:

### List of partner organisations

Your list of partner organisations is not valid. It should respect the rule(s) below:					
Valid	<p style="margin: 0;">All organisations should be from one of the following countries:</p> <p style="margin: 0; font-size: small;">Austria, Belgium, Bulgaria, Croatia, Cyprus, Czech Republic, Denmark, Estonia, Finland, Former Yugoslav Republic of Macedonia, France, Germany, Greece, Hungary, Iceland, Ireland, Italy, Latvia, Liechtenstein, Lithuania, Luxembourg, Malta, Netherlands, Norway, Poland, Portugal, Romania, Slovakia, Slovenia, Spain, Sweden, Turkey, United Kingdom, Afghanistan, Albania, Algeria, Argentina, Armenia, Azerbaijan, Bangladesh, Belarus, Bhutan, Bolivia, Bosnia and Herzegovina, Brazil, Cambodia, Chile, China (People's Republic of), Colombia, Costa Rica, Cuba, Ecuador, Egypt, El Salvador, Georgia, Guatemala, Honduras, India, Indonesia, Iran (Islamic Republic of), Iraq, Israel, Jordan, Kazakhstan, Korea (Democratic People's Republic of), Kosovo * UN resolution, Kyrgyzstan, Lao (People's Democratic Republic), Lebanon, Libya, Malaysia, Maldives, Mexico, Moldova (Republic of), Mongolia, Montenegro, Morocco, Myanmar, Nepal, Nicaragua, Pakistan, Palestine, Panama, Paraguay, Peru, Philippines, Russian Federation, Serbia, South Africa, Sri Lanka, Syrian Arab Republic, Tajikistan, Thailand, Tunisia, Turkmenistan, Ukraine, Uruguay, Uzbekistan, Venezuela, Viet Nam, Yemen</p>				
Not valid	<p style="margin: 0; color: red;">The role of each participating organisation should be introduced.</p>				
Partner no	PIC	Role	Organisation Name	City	Country

This relates to the field ‘**Role in the application**’ in Part A.1. Simply fill in the corresponding fields and, once you have saved, closed and reopened the form, the ‘Not valid’ message will disappear.

For any other ‘Not valid’ messages, please consult Part A, Step 4 of this guide.

**Character limits**

This table provides the character limits for all text fields where the limit has not been cited directly on the eForm itself. The limit includes spaces between words. Numeric fields are not included in the table.

<b>Part</b>	<b>Field</b>	<b>Character Limit</b>
First Page	Project title	300
	Project acronym	7
A	Street name and number	57
	Postcode	12
	Town	60
	Cedex	60
	PO Box	60
	Telephone 1/Telephone 2/Fax	60
	Title	25
	Family name	62
	First name	62
	Department/Faculty	40
	Role in the organisation	32
Email address	100	
C.3	If the project refers to the priority identified as "Others (Multidisciplinary / Interdisciplinary)"...	250
C.4	Please specify the partner countries involved	250 (per row)
C.5	Project history, full reference number	40